

Historic, archived document

Do not assume content reflects current scientific knowledge, policies, or practices.



BUIST'S.

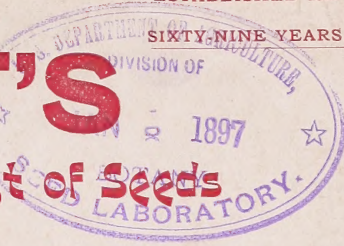
62,75

JANUARY 1, 1897.

ESTABLISHED 1828

INCORPORATED 1895.

BUIST'S



Wholesale Price List of Seeds

FOR

Market Gardeners OR Truckers

Perfection of Quality with us is of the First Importance. The cost of its Production is always a Secondary Consideration.

AWARDED
GRAND PRIZE
MEDAL FOR
PURITY
AND
DIPLOMA OF
HONOR
FOR SUPERIOR
QUALITY.



THERE IS
PROFIT
IN
GARDENING
IF YOU
SOW
BUIST'S
SEEDS.

THE MOST SERIOUS AS WELL AS THE MOST UNPROFITABLE INVESTMENT FOR THE MARKET GARDENER IS THE SOWING OF SPURIOUS SEEDS.
Over Thirty Million Dollars worth of Garden Seeds are annually sold in this country, one-half of which are worthless either from old age or spurious stocks.

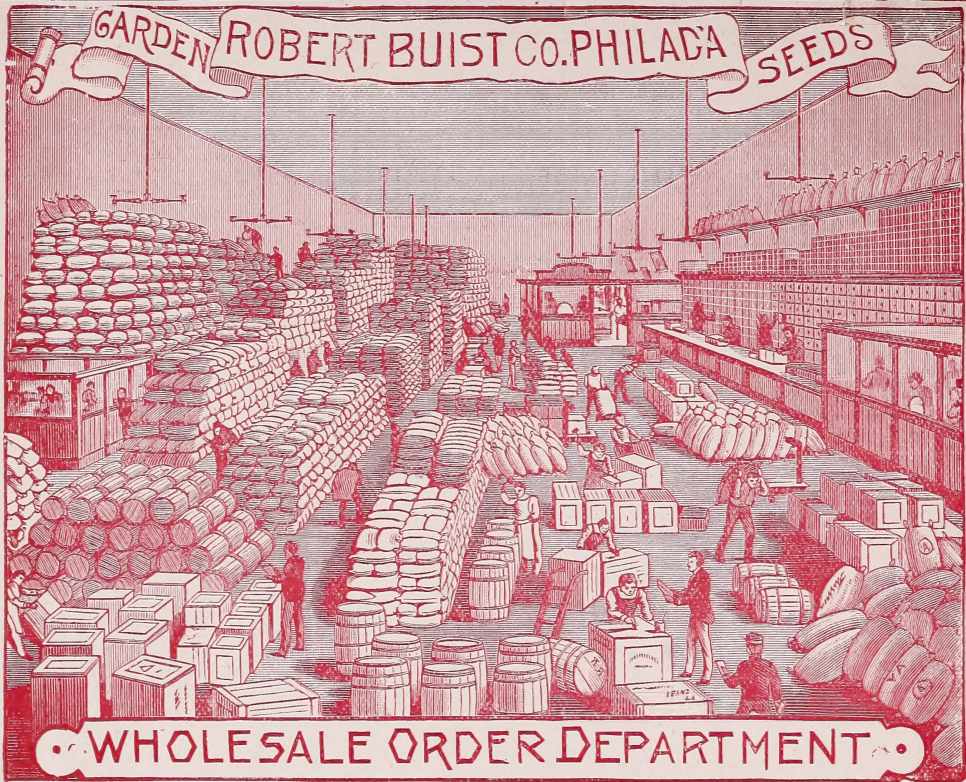
SEED FARMS:—ROSEDALE, WATERFORD and MORRISVILLE

ROBERT BUIST COMPANY,
SEED GROWERS,

Stores, 922 and 924 Market Street,

Next to the Post Office.

PHILADELPHIA, PA.



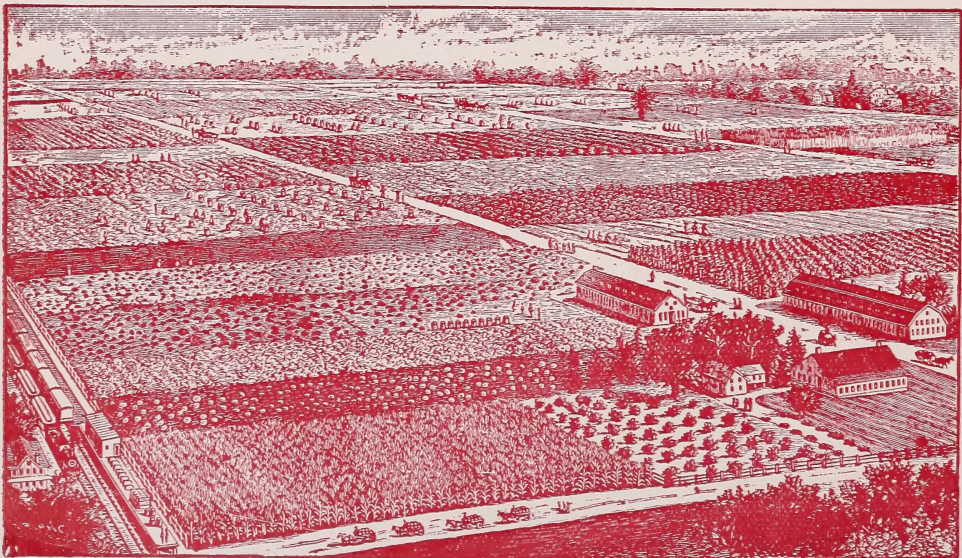
PHILADELPHIA, January 1, 1897.

This Wholesale Catalogue is published exclusively for our Market Garden Trade, who require seeds in much larger quantities than those who grow for their own requirements; the latter are referred to Buist's Garden Guide and Almanac for '97, a very useful and valuable publication and beautifully illustrated, copies of which are mailed free on application.

This is the 69th Year for Buist's Garden Seeds.

Our specialty is the growing of Seeds from Selected Seed Stocks. The great importance of following this system for the production of choice vegetables is familiar to all gardeners; if the vegetables from which seeds are grown are inferior or impure so will be their product.

Robert Buist Company





Buist's Early Morning Star Pea.

THE EARLIEST PEA IN THE WORLD.

The Most Profitable Market Variety, Ready to Pick in 42 to 45 Days.

WE are the introducers of this CELEBRATED VARIETY, and put them up in Green Muslin Sacks of $\frac{1}{4}$, $\frac{1}{2}$, and 1 bushel, and *Each Sack is fastened with our Lead Seal with the name of Buist stamped on it. Seed of this variety offered in any other way is Spurious stock.*

WE SELL OVER 10,000 BUSHELS ANNUALLY.

Where EARLINESS, productiveness, large-sized pods and sweetness of flavor are desired, this is the variety to grow ; it may be truly called the BLOODED STOCK of EXTRA EARLIES, and stands at the head of the list for the above fine qualities ; in a favorable season they will be ready for market in 42 days, and the entire crop can be taken off in two pickings.

To the market gardener, earliness is of the greatest importance, as even a few days frequently makes a great difference in price, often a depreciation of from \$2.00 to \$4 00 per barrel ; the inexperienced find this out when too late ; therefore the EARLIEST is WHAT is REQUIRED, and the EARLY MORNING STAR is THAT variety. **Sow them, you will make no mistake. We Annually grow 500 Acres of them.** It was introduced by us in '87 and sold that year two thousand bushels, and each year the demand for them has annually increased ; they have been the first Peas shipped North from the great pea growing districts of Florida, Louisiana, Mississippi and North Carolina, since '88 which can be readily attested to by the growers in those sections, and in New Jersey and Long Island where thousands of acres of them are annually grown, they have attained the same reputation for both earliness and productiveness. Their growth ranges from two to two and a half feet, in accordance with the season, they are entirely free from runners and never require sticking ; it is an easy variety to pick as almost a handful can be grasped at a time.

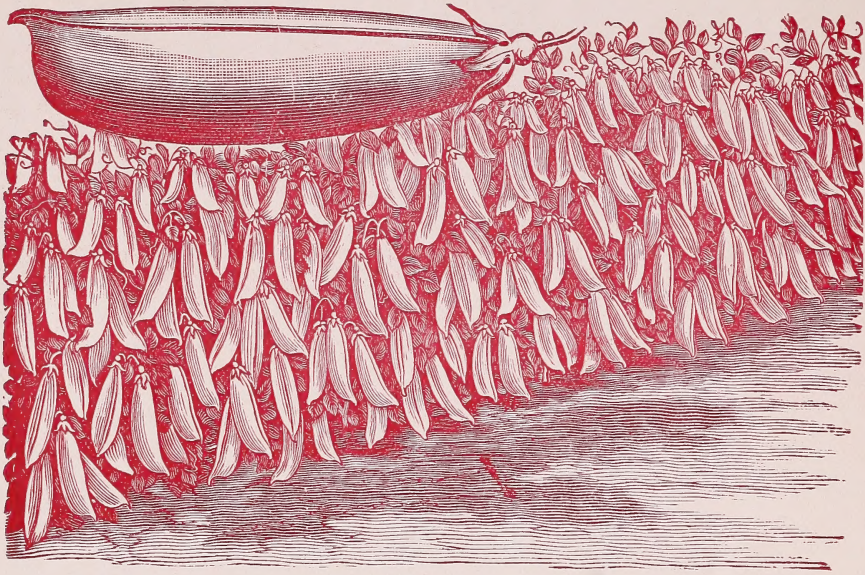
PLEASE OBSERVE that the true stock of the MORNING STAR can only be had through our house or from the Merchants who handle our Seeds

We insert this caution from the fact that a variety sold the past season by a Philadelphia firm under this name, proved to be nothing but an ordinary variety full of runners and ten days later than the genuine stock ; its great popularity has caused a great demand for them.

Therefore in purchasing be sure you get them in our Green Muslin Sacks which are lead sealed by us, you will then be certain of securing the correct stock. ☞ Those offered under this name in any other way are spurious.

PRICES.

<table style="width: 100%; border-collapse: collapse;"> <tr> <td style="width: 10px; text-align: center;">1</td> <td style="width: 80%;">Bushel.....</td> <td style="width: 10%;">\$1.00</td> </tr> <tr> <td style="text-align: center;">1</td> <td style="text-align: center;">"</td> <td style="text-align: center;">1.50</td> </tr> <tr> <td style="text-align: center;">1</td> <td style="text-align: center;">"</td> <td style="text-align: center;">2.50</td> </tr> <tr> <td style="text-align: center;">1</td> <td style="text-align: center;">"</td> <td style="text-align: center;">4.50</td> </tr> </table>	1	Bushel.....	\$1.00	1	"	1.50	1	"	2.50	1	"	4.50	<table style="width: 100%; border-collapse: collapse;"> <tr> <td style="width: 10px; text-align: center;">5</td> <td style="width: 80%;">Bushels at.....</td> <td style="width: 10%;">\$4.25</td> </tr> <tr> <td style="text-align: center;">10</td> <td style="text-align: center;">"</td> <td style="text-align: center;">4.00</td> </tr> <tr> <td style="text-align: center;">25</td> <td style="text-align: center;">"</td> <td style="text-align: center;">3.75</td> </tr> <tr> <td style="text-align: center;">100</td> <td style="text-align: center;">"</td> <td style="text-align: center;">3.50</td> </tr> </table>	5	Bushels at.....	\$4.25	10	"	4.00	25	"	3.75	100	"	3.50
1	Bushel.....	\$1.00																							
1	"	1.50																							
1	"	2.50																							
1	"	4.50																							
5	Bushels at.....	\$4.25																							
10	"	4.00																							
25	"	3.75																							
100	"	3.50																							



Buist's Premier Extra Early Pea.

The Earliest, Most Productive and most Profitable Variety for Market
(Excepting the Celebrated Buist's Morning Star.)

Before the introduction of the famous Morning Star, this was the earliest and most profitable variety known; and to-day requires no comment from us to recommend it, as it is grown more largely by the market gardeners of this country than any other brand of Extra Earlys, excepting the Buist's Morning Star. Its productiveness, earliness, evenness of ripening and great delicacy of flavor are its great features; these combined requisites makes it very profitable to grow for either market or private use; it is a week earlier than what is called "The First and Best" and of a much finer bred variety; producing pods of large size and entirely free from runners; it ripens uniformly and the entire crop can be taken off in two pickings. It is also one of the very best varieties for canning purposes. It is sold only under our seal.

Prices— $\frac{1}{4}$ bushel, \$1.15; $\frac{1}{2}$ bushel, \$2.25; 1 bushel, \$4.25; 5 bushels at \$4.00; 10 bushels at \$3.75; 25 bushels at \$3.50; 100 bushels at \$3.25.

The ADMIRAL or CECELIA PEA.—The best of all varieties for canning purposes; is wrinkled, sweet and of delicious flavor. Price: 4 qts. 75c.; peck \$1.25; bush. \$4.75; 5 bush. at \$4 50.

OTHER VARIETIES OF EXTRA EARLY PEAS.

	$\frac{1}{4}$ Dus.	$\frac{1}{2}$ Bus.	1 Bus.	5 Bus. at		$\frac{1}{4}$ Bus.	$\frac{1}{2}$ Bus.	1 Bus.	5 Bus. at
First of All.....	\$1.25	\$2.25	\$4.00	\$3 75	Philadelphia Extra Early...	\$1.15	\$2 15	\$4 00	\$3 75
Extra Early Market....	1.25	2.25	4.00	3.75	Alaska Extra Early.....	1.15	2.25	4.00	3.75
First and Best Extra Early	1.15	2 15	4 00	3.75	Canada Extra Early.....	1.15	2.25	4.00	3.50
Maud S. Extra Early...	1.15	2.00	3.75	3.50	Eureka Extra Early.....	1.25	2 25	4.00	3.75

Earliest and Most Productive.



Almost Entirely Stringless.

BUIST'S

Lightning Early Valentine Beans.

THE BEST EARLY MARKET VARIETY.

(10 to 12 days earlier than any other Valentine.)
(Sold only in our Sealed Sacks.)

This recently introduced variety which has become famous in all the Bean-growing sections of our country, is well named, as it is lightning in ripening in comparison with any other stock of this popular Bean. The pods are large and round, is very productive, and when young entirely stringless. It cannot be recommended too highly to the market gardener, as he derives his greatest profit from the earliest crops, and this surpasses all other stocks of Valentines in both earliness and productiveness. It is sold only in our sealed packages and lead-sealed sacks.

Price.— $\frac{1}{4}$ bushel, \$1.25 ; $\frac{1}{2}$ bushel, \$2.25 ; 1 bushel, \$4.25 ; 5 bushels at \$4.00 ;
10 bushels at \$3.75.

IMPROVED EARLY VALENTINE BEANS.

Price.— $\frac{1}{4}$ bushel, \$1.15 ; $\frac{1}{2}$ bushel, \$2.25 ; 1 bushel, \$4.00 ; 5 bushels at \$3.75 ; 10 bushels at \$3.50

EXTRA EARLY ROUND-PODDED REFUGEE BEANS.

Price.— $\frac{1}{4}$ bushel, \$1.00 ; $\frac{1}{2}$ bushel, \$2.00 ; 1 bushel, \$4.00 ; 5 bushels at \$3.75 ;
10 bushels at \$3.50

EARLY REFUGEE OR THOUSAND TO ONE.

Price.— $\frac{1}{4}$ bushel, \$1.00 ; $\frac{1}{2}$ bushel, \$2.00 ; 1 bushel, \$3.75 ; 5 bushels at \$3.50 ; 10 bushels at \$3.25

Entirely Stringless.

Not Liable to Rust.



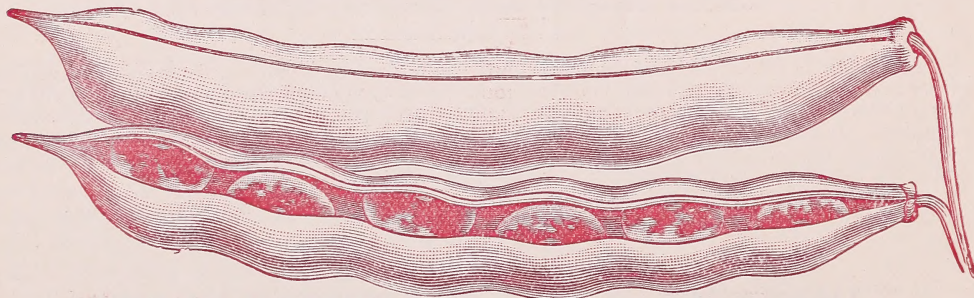
Crosscup West. Eng. Co.

The Best Market Variety.

DWARF BUTTER WAX BEAN, BISMARCK.

THE CREAM OF ALL THE WAX VARIETIES. (RUST-PROOF.)

This celebrated variety, which we introduced a few years since, is one of the most attractive and famous varieties of Wax Beans known in Germany; its great beauty, and extraordinary length of pods, attracted our attention in the markets of Berlin in '87; we found them in quality so far superior to any variety of the Wax that we had ever tasted that we secured sufficient for seed purposes for that year, and have since then grown them very extensively; they cannot be recommended too highly to all lovers of the Butter Bean. They are very early, the pods of which are produced in great profusion, and will average six inches in length, are almost transparent, exceedingly brittle and of very delicate flavor; the bean when dry is of a beautiful blueish black color and of a kidney shape. Price, $\frac{1}{4}$ bushel, \$1.50; $\frac{1}{2}$ bushel, \$3.00; 1 bushel, \$5.50.



DWARF SPECKLED KIDNEY WAX BEAN.

We regard this bean as one of the very best of the Wax varieties, even surpassing the famous Dwarf Golden or Cream Wax in both quality and productiveness, and is a grand market sort; the plants become literally loaded with long beautiful waxy colored pods, which are entirely stringless, and of a rich luscious flavor, it is also quite as early as the earliest stock of Valentines. The pods are very long, broad and flat, and are exceedingly brittle; beans, when dry, are white, with two shades of reddish purple, more or less visible, of a distinct kidney shape. We cannot recommend it too highly for either market or family use. Price.— $\frac{1}{4}$ bushel, \$1.25; 1 bushel, \$4.50; 5 bushels at \$4.25; 10 bushels at \$4.00.

Currie's Rust-Proof Dwarf Wax,.....	$\frac{1}{4}$ bus. \$1.25	1 bus. \$4.50	5 bus. at \$1.00
Improved Rust-Proof Golden Wax,.....	1.25	4.50	4.00
Improved Dwarf Prolific German or Black Wax,.....	1.25	4.50	4.00
Dwarf Golden-Eyed Wax,.....	1.25	4.50	4.00
Dwarf Scarlet or Crimson Wax Flageolet,.....	1.25	5.00	4.50
Dwarf German or Black Wax,.....	1.25	4.50	4.00

BUIST'S PERFECTION EARLY WHITE SPINE CUCUMBER.

THE MARKET GARDENERS first and most important consideration in growing Cucumbers for market is to obtain the choicest seed stock for planting. Most of the crops grown are very much mixed and of inferior quality. Buist's Perfection is regarded by growers as the finest and purest stock known. It is not only the earliest, but it produces cucumbers of the finest form and most salable size for shipping purposes. It was introduced by us a few years since, and is already being grown by the most extensive cucumber cultivators in this country. We annually grow especially for seed, over 150 acres; it is

The Earliest, Finest Formed and most salable variety to grow for shipping.



THE GREAT MARKET GARDEN VARIETY

which is put up in our Sealed $\frac{1}{4}$, $\frac{1}{2}$ and 1 pound Cartoons only; we sell it no other way. It has become the most popular and salable stock of White Spine Cucumber Seed in this country. Seed sold for this variety in any other way than in our Sealed Cartoons is SPURIOUS. Price, $\frac{1}{4}$ lb., 30 cts.; per lb., \$1.00; 5 lbs. at 90 cts.; 10 lbs. at 80 cts.; 25 lbs. at 75 cts. per lb

THE MOST PROFITABLE.



EARLY MARKET VARIETY.

EARLY JERSEY WAKEFIELD CABBAGE.

(BUIST'S SELECTED STRAIN. Its Great Features are Its Size and Earliness.)

Each year this variety is becoming more popular and demand greater. It has not been very long since its growth was confined almost exclusively to the market gardeners of New Jersey, but it has gradually disseminated into other sections, and now is well known and highly appreciated by all the leading market gardeners of this country. We regard it as one of the best and most profitable early varieties, for either market or private gardens, it is always sure to form fine solid heads, and is the largest heading of the early varieties; the strain of seed which we offer is regarded by the most extensive cabbage growers as the best in this country. Price, oz. 25 cts.; $\frac{1}{4}$ lb. 65 cts.; lb. \$2.25; 5 lbs. \$10.00.

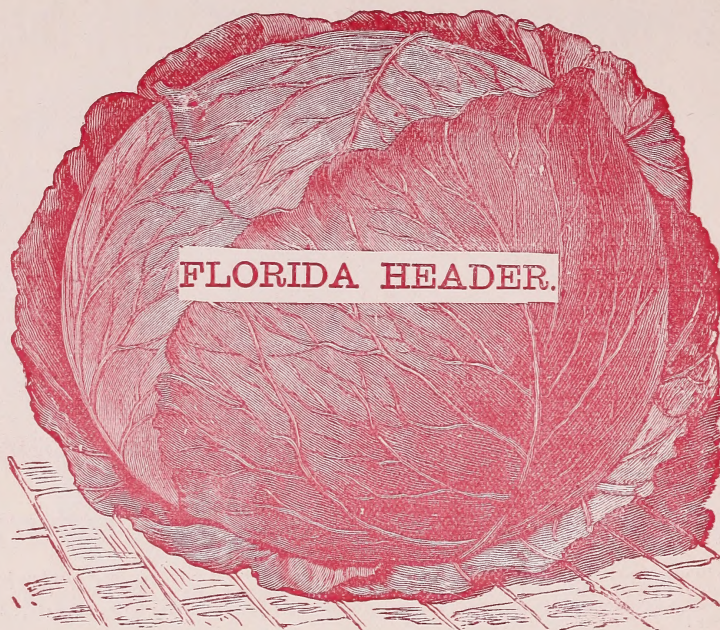
THE CHARLESTON, OR LARGE JERSEY WAKEFIELD CABBAGE.

This famous variety differs only from the Early Jersey Wakefield in its earliness and size of its heads, which are twice as large and only a week later. As a second early market variety it is very valuable and unsurpassed. Price per oz., 25 cts.; 4 oz., 65 cts.; lb., \$2.25; 5 lbs., \$10.00.

HENDERSON'S EARLY SUMMER CABBAGE.

This is also a very popular and profitable variety for the market gardener, as its heading season is between the Large Jersey Wakefield and Early Drumhead, producing heads of double the size of the former and almost equal to the latter, frequently weighing from 12 to 20 pounds each; of round, flattened form, very compact and solid and of excellent quality. Its leaves turns into heads almost as soon as formed, which permits of close planting. Price per oz., 20 cts.; 4 oz., 60 cts.; lb., \$2.25; 5 lbs., \$10.00.

This Variety is put up and sold
only under our seal.



and can only be obtained from
our house.

BUIST'S Celebrated Florida Header Cabbage.

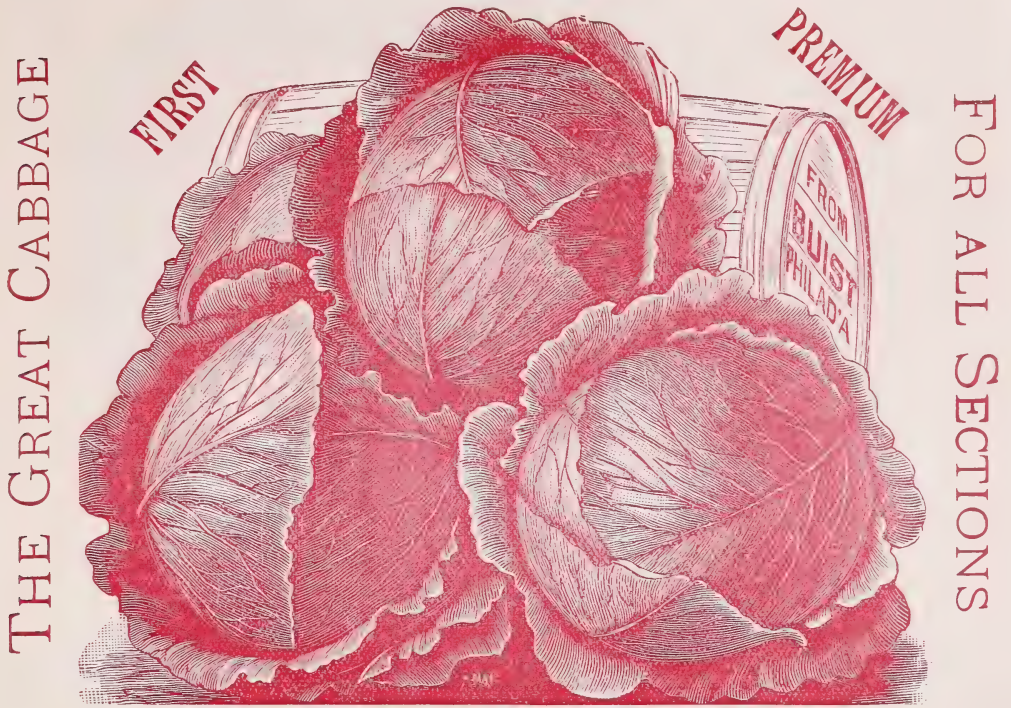
THE GREAT CABBAGE FOR FLORIDA AND LOUISIANA.

This variety which we introduced, requires no further endorsement by us as it has become famous not only in Florida and Louisiana, but throughout the entire country, and has taken the front rank for its certainty of heading and fine market qualities; we have not yet been able to grow sufficient seed to supply the great demand for it; in Florida, Louisiana and other extreme sections of the South, where so much trouble and disappointment frequently occurs in heading cabbage, it has proved a universal favorite, and growers in those sections appear to be wild in its praise and recommendations, and state they have never had any variety to equal it, scarcely a single failure can be found in whole fields, and the heads average from 15 to 30 pounds each; we therefore named it the FLORIDA HEADER. It is now being grown by almost every Cabbage grower in the South. In the Western States which are more favorable for the growth and heading of Cabbage than the South, it has proved equally as successful, and forms heads of a much larger size; it is much earlier than the Drumhead or Flat Dutch, and on account of its not being so rank in growth can be planted much closer together, therefore producing more heads to the acre. As a variety for market, shipping or private gardens it has no equal.

☞ This seed is put up and sold only under our Seal, and can be obtained only from our House.
Price, oz., 30 cts.; $\frac{1}{4}$ lb., \$1.00; 1 lb., \$3.00; 5 lbs. \$12.50.

HENDERSONS SUCCESSION CABBAGE.

This is one of the most valuable varieties ever introduced and one that has become very popular with all market gardeners—in fact no gardener can afford to be without it, whether he grows for market or for private use. It is a second early variety following the Early Summer in heading, but forming heads of a much larger size and of a greater uniformity. On Long Island where we annually grow over one hundred and fifty acres in cabbage seed this variety has attracted great attention, as it shows the very finest breeding. In whole fields almost every head appears to be moulded from the same model. It can be grown successfully either as an early, medium or a late crop, and under any circumstances it is not liable to shoot to seed until after it forms its fine solid heads. Price, per oz., 20 cts.; 4 oz., 60 cts.; 1 lb., \$2.25; 5 lbs., for \$10.00.



Buist's Improved Drumhead Cabbage, (SEALED.)

THE GREAT PRIZE MEDAL STOCK.

AWARDED 22 PREMIUMS IN ONE YEAR.

Will produce Large Solid Heads in any country and in any soil. The richer the soil, the finer the heads.

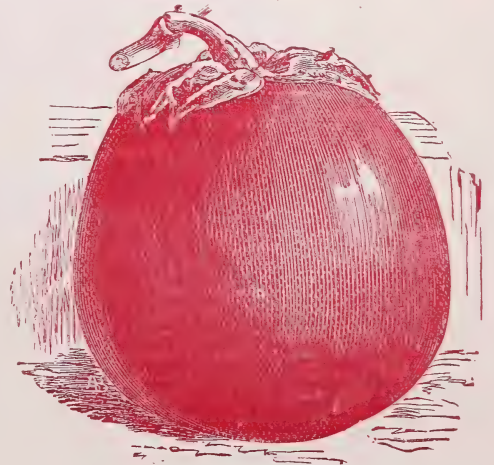
When it is generally admitted that the product of over one-half of the cabbage seed sold in this country never heads, and that which even grows is of very inferior quality, there is no wonder that a variety which heads as sure as the sun rises has become so celebrated throughout the entire country—this variety is known as BUIST'S IMPROVED DRUMHEAD, as illustrated above. For over 25 years we have been the most extensive growers of Cabbage Seed in this country, and during that time we have made the selections and improvement of our Seed a special study; each year the finest heads from our growing crops are selected and planted out especially to seed the following season, the centre seed stocks of which are only allowed to produce seed. This continued improvement, for so long a period, has produced a stock of Drumhead Cabbage that has no equal for its compact growth, short stem, and for its large and beautiful heads; letters are annually received from every section of our country speaking its praise. In the Eastern and Western States the heads will attain from 25 to 60 pounds, and in the South from 15 to 30 pounds each. Seed sown in April will head in July and August; sown in May will head in October. Per oz., 30 cts.; $\frac{1}{4}$ lb., \$1.00; lb., \$3.00; 5 lbs. for \$12.50.

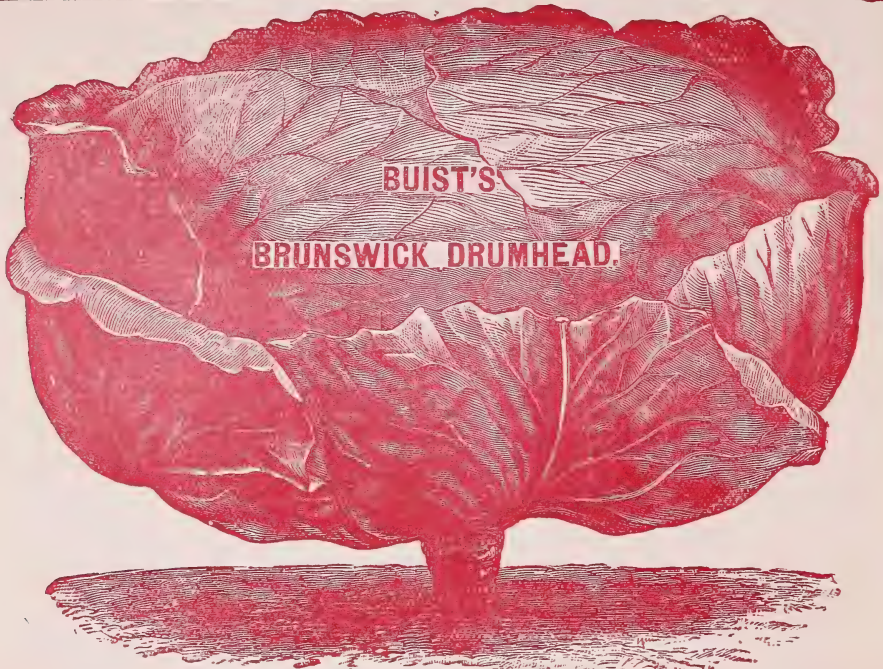
Buist's Improved Large Thornless Purple Egg Plant.

This is an improvement in earliness, productiveness and size of fruit over the ordinary large purple variety, or what is known as the New York Purple; it is of a very dark rich color and of beautiful form. It is also the most salable and attractive variety for market and the most profitable to grow because more productive. We annually grow 25 acres of this variety especially for seed. Per oz., 40 cts.; $\frac{1}{4}$ lb., \$1.25; lb., \$4.50; 2 lbs. for \$8.00.

NEW YORK IMPROVED PURPLE.

This is grown very largely by the market gardeners of New York; it is of a large oval shape, with smooth stems, quite productive and of good size. Per oz., 35 cts.; $\frac{1}{4}$ lb., \$1.00; lb., \$3.50.





BUIST'S SELECTED SHORT-STEM BRUNSWICK DRUMHEAD CABBAGE.

(The Seed of this Variety is Sold only under our Seal.)

⚡ The Great Demand for it requires us to protect Ourselves and Customers in this manner. Seed offered in any other way is Spurious.

The true Short-Stem Brunswick Drumhead Cabbage has been for many years a general favorite with the market gardeners and cabbage growers located in Louisiana, Florida and other tropical sections of this country, not only for its being especially adapted to their climate and great certainty in heading, but also for the size and superior quality of the cabbage; but, unfortunately, a very large percentage of the seed sent out and sold under the name of Brunswick is either spurious stock or so much mixed with other varieties as to be almost valueless to the gardener; for this reason we have introduced what is known as the

BUIST'S SELECTED SHORT-STEM BRUNSWICK DRUMHEAD.

For the past few years we have paid special attention to the improvement and selection of this valuable variety and the seed which we offer will be found superior to any in the world; it is perfection in growth, habit, and in the formation of its heads, which are much larger, more compact and closer grain than the old Brunswick; market gardeners who have grown this stock pronounce it the finest they have ever had. It is put up and sold only in our sealed packets, ounces, quarters, halves and pounds, and can only be had from our house or from the merchants who handle our seeds. Per oz., 30 cts.; 4 oz., \$1.00; 1b., \$3.00; 5 lbs. for \$12.50.

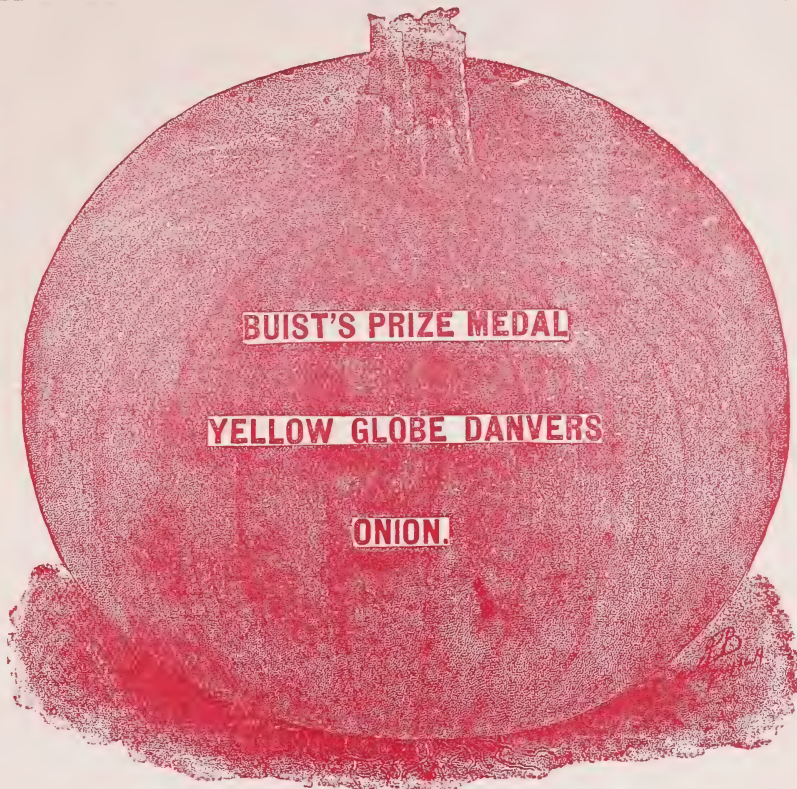


BUIST'S HALF-LONG OR SCARLET INTERMEDIATE CARROT. (Pointed-Root.)

This is undoubtedly the best and most salable variety for market, it is very productive, producing large and handsome roots of perfect form, and of a beautiful orange red color. Per oz., 10 cts.; ¼ lb., 25 cts.; 1b. 80 cts.; 5 lbs. \$3.50.

BUIST'S PEDIGREE

ONION SEED



BUIST'S PEDIGREE ONION SEEDS.

We are very extensive growers of Onion Seed, making it one of the specialties of our House. The stock from which we grow our seed, is our old Pedigree stock, famous throughout the country for its purity and fine quality. We make an annual selection of the bulbs from which we grow our supplies; this always insures to our customers seed of the greatest purity and strongest growth.

	¼ lb.	Per lb.	5 lbs. at	10 lbs. at	25 lbs. at
Buist's Yellow Globe Danvers.....	\$0.35	\$1.20	\$1.15	\$1.00	\$0.90
Yellow Flat Danvers.....	.35	1.20	1.15	1.00	.90
Yellow Strasburg35	1.20	1.15	1.00	.90
Large Red Wethersfield.....	.40	1.30	1.20	1.10	1.00
White or Silver Skin.....	.75	2.30	2.20	2.10	2.00
Southport Red Globe.....	.50	1.50	1.40	1.30	1.20
Southport Yellow Globe.....	.50	1.50	1.40	1.30	1.20
Southport White Globe.....	.75	2.50	2.40	2.30	2.20



**BUIST'S
Selected Onion Sets**

Our Onion sets are very bright and handsome samples, and of small size, which are the best, for planting. They are far superior to Western, or Southern-grown sets, as they are always large in size and spongy, sprouting earlier and shooting to seed before forming large onions.

	Per Peck	Per Bus.	5 Bus. at
Yellow Onion Sets.....	\$0.75	\$2.75	\$2.50
Red Onion Sets.....	0.75	2.75	2.50
Dark Red Onion Sets.....	1.00	3.00	2.75
White Silver-Skin Onion Sets.....	1.00	3.50	3.25

Market Gardeners' Wholesale Price List.

☞ Remittances by Post Office Orders or drafts must accompany all orders. Sacks, barrels and boxes used in packing are charged at cost. Shipping directions must be distinctly written.

☞ Heavy seeds should be sent by freight and light seeds by express or mail. If ordered by mail, 8 cents per pound, or 16 cents per quart on Peas, Beans and Corn must be added to the price of the seeds.

PEAS.	Per 4 Qts.	Per Peck.	Per Bush.
(See pages 3 and 4 for quotations on large quantities).			
Buist's Premier Extra Early.....	\$ 80	\$1 15	\$4 25
Buist's Early Morning Star, (in Sealed Bags only). This is the Earliest and Best Variety.....	1 00	1 50	4 50
Buist's First and Best.....	65	1 15	4 00
Alaska	75	1 15	4 00
Maud S.	75	1 15	3 75
First of All.....	75	1 25	4 00
Philadelphia Extra Early.....	65	1 15	4 00
Canada Extra Early.....	60	1 15	3 75
Early American Wonder.....	1 00	1 60	5 75
Early Premium Gem.....	1 00	1 25	4 75
McLean's Little Gem.....	1 00	1 25	4 75
Early Tom Thumb.....	1 00	1 50	5 50
Early Dan O'Rourke.....	50	90	3 25
Improved Early Dan O'Rourke.....	60	90	3 50
Early Washington.....	50	90	3 25
Early Frame.....	50	90	3 25
Early May.....	50	90	3 25
Early Kent.....	50	90	3 25
Horsford's Market Garden.....	1 00	1 40	4 75
Blue Beauty.....	1 00	1 40	4 50
The Heroine.....	1 00	1 50	5 50
Shropshire Hero.....	1 00	1 50	5 00
Duke of Albany.....	1 00	1 50	5 00
Forty Fold.....	65	1 00	3 75
Laxton's Evolution.....	1 00	1 50	5 50
Kentish Invicta.....	75	1 00	3 50
Eugenie.....	80	1 25	4 50
Champion of England.....	65	1 00	3 75
Yorkshire Hero.....	75	1 50	5 00
Telephone.....	1 00	1 50	5 50
Stratagem.....	1 00	1 50	5 50
Pride of the Market.....	1 00	1 50	5 50
McLean's Advancer.....	75	1 25	4 50
Dwarf Blue Imperial.....	65	1 00	3 50
Black-Eyed Marrowfat.....	50	75	2 50
Large White Marrowfat.....	50	75	2 50
Dwarf White Sugar Marrow.....	60	80	2 75
Dwarf Sugar (Purple Blossom).....	1 00	1 75	6 50
Tall Sugar (Purple Blossom).....	1 00	1 75	6 50

BEANS.

GREEN-PODDED VARIETIES.

(Bush or Snap-Short.)

(See pages 5 and 6, for quotations on large quantities).

Imp'd Red Speckled Valentine.....	75	1 15	4 00
Buist's Lightning Valentine.....	1 00	1 25	4 25
Early Mohawk, Six Weeks.....	75	1 00	3 75
Early Long Yellow, Six Weeks.....	75	1 00	3 75
Best of All.....	80	1 25	4 50
Best of All (Buist's Selected).....	1 00	1 40	5 00
Shippers' Favorite.....	1 00	1 40	5 00
Ex. Early R'nd Podd'd Refugee.....	75	1 00	4 00
Early Refugee or Th'sand to One.....	75	1 00	3 75
Early China Red-Eye.....	75	1 00	3 75
Henderson's Bush Lima.....	1 25	1 75	6 00
Burpee's Bush Lima.....	1 40	2 00	7 00
Thorburn's Bush Lima.....	1 40	2 00	7 00
White Marrow.....	75	1 00	3 50
White Kidney.....	75	1 00	3 50
White Navy.....	75	1 00	3 50

YELLOW-PODDED VARIETIES

	Per 4 Qts.	Per Peck.	Per Bush.
Dwarf German or Black Wax..	\$1 00	\$1 25	\$4 50
Dwarf German or Black Wax (Buist's Selected Stock).....	1 00	1 50	5 00
Imp'd Dwarf Prolific Black Wax.....	1 00	1 25	4 50
Dwarf Golden, or Cream Wax..	1 00	1 25	4 50
Dwarf Golden, or Cream Wax (Improved Rust Proof).....	1 00	1 25	4 50
Dwarf Butter Wax, Bismarck.....	1 25	1 50	5 50
Dwarf Speckled Kidney Wax..	1 00	1 25	4 50
Curry's Rust Proof Wax.....	1 00	1 25	4 50
Dwarf White Wax.....	1 00	1 50	5 00
Crystal White Wax.....	1 00	1 50	5 00
Ivory Pod Wax.....	1 00	1 50	5 00
Black-Eyed Wax.....	1 00	1 25	5 00
Golden-Eyed Wax.....	1 00	1 25	4 50
Crimson Flageolet Wax.....	1 00	1 25	4 50
Yosemite Dwarf Wax.....	1 50	2 00	7 50

BEANS. (Pole or Runners.)

Large White Lima.....	1 00	1 75	6 50
Large White Lima, Extra Size.....	1 25	2 00	7 00
Salem Mammoth Lima.....	1 50	2 25	7 50
Dreer's Improved Lima.....	1 00	1 75	6 75
Carolina or Sewee.....	1 00	1 75	6 50
Extra Early Jersey Lima.....	1 50	2 00	7 00
King of the Garden Lima.....	1 50	2 00	7 00
Ford's Mammoth Lima.....	1 50	2 00	7 00
Kentucky Wonder.....	1 00	1 50	5 50
German, or Black Wax Pole.....	1 00	1 75	6 00
Early Golden Cluster Wax.....	1 50	2 00	7 00
Southern Prolific.....	1 00	1 25	5 00
Fat Horse, South'n Crease Back Horticultural, or Wren's Egg..	1 00	1 50	6 00
Scarlet Runners.....	1 00	1 75	6 50
Dutch Case Knife.....	1 00	1 50	5 50

ARTICHOKE.

	Per Oz.	Per ¼ lb.	Per lb.
Green Globe.....	25	75	2 75

ASPARAGUS.

Large Purple Top.....	10	15	40
Conover's Colossal.....	10	15	40
The Palmetto.....	15	40	1 00

ASPARAGUS ROOTS.

Conover's Colossal Per 100, \$0 75	
Per 1000, \$5 00.....	
Barr's Mammoth Per 100, \$0 75	
Per 1000, \$6 50.....	

BEET (Turnip-Rooted)

We sell 10 lbs. of Beet of any one variety at 10 cts. per lb. less than quoted.

Extra Early Turnip, or Bassano.....	10	20	50
Early Red Turnip.....	10	20	50
Early Dark Blood Turnip.....	10	20	50
Dewing's Early Red Turnip.....	10	20	50
Philadelphia Early Red Turnip.....	10	20	50
Buist's Extra Early Red Turnip.....	15	35	1 00
Bastian's Early Red Turnip.....	10	20	50
Lentz's Early Red Turnip.....	10	20	50
Early Egyptian Red Turnip.....	10	20	50

BEET.—Continued.

	Per oz.	Per ¼ lb.	Per lb.
Early Egyptian Red Turnip (Buist's Stock).....	\$ 10	\$ 20	\$ 75
Early Eclipse Red Turnip.....	10	20	50
Early Othello Blood Turnip.....	10	30	1 00
Edmand's Blood Turnip.....	10	20	50
Shull's Model Blood Turnip.....	15	30	1 00
Swiss Chard.....	10	20	50

BEET (Long Varieties).

Long Blood Red.....	10	20	50
Buist's Long Blood.....	15	30	1 00
Bastian's Half-Long Blood.....	10	20	50

BEET (Stock Feeding).

White French Sugar.....	10	15	40
Lane's Imperial Sugar.....	10	15	40
Long Red Mangel.....	10	15	40
Orange Globe Mangel.....	10	15	40
Champion Mammoth Long Red Mangel.....	10	15	40
Champion Yellow Globe Mangel.....	10	15	40
Buist's Mammoth Long Red ..	10	15	50
Buist's Golden Globe Mangel...	10	15	50
Golden Tankard Mangel.....	10	15	40
Chirk Castle Long Red Mangel	15	20	75

BORECOLE (See Kale).

Dwarf German Greens.....	10	25	75
Extra Dwarf Curled.....	15	40	1 25

BUSSELS SPROUTS.....

	15	50	1 75
--	----	----	------

CABBAGE.

We sell 5 lbs. of any one variety of Cabbage at 25 cts. per lb. less than quoted.

Early Jersey Wakefield (sel'd)	25	65	2 25
Charleston Jersey Wakefield...	25	65	2 25
Buist's Early Dwarf York.....	20	60	2 00
Buist's Early Large York.....	20	60	2 00
Buist's Earliest.....	25	75	2 50
Extra Early Express.....	20	50	1 75
Earliest Etamps.....	20	50	1 75
Henderson's Early Summer.....	20	60	2 25
Henderson's Succession.....	25	60	2 25
Early French Oxheart.....	20	60	2 00
Early Bullock Heart.....	20	60	2 00
Early French Winnigstadt.....	20	50	1 75
Early Prussian Winnigstadt.....	30	75	2 50
Premium Large Late Drumhead	20	50	1 75
Premium Late Flat Dutch.....	20	50	1 75
Improved Late Drumhead.....	20	70	2 00
Improved Late Flat Dutch.....	20	70	2 00
Buist's Imp'd Late Drumhead (Sealed. Prize Medal Stock)	30	1 00	3 00
Buist's Imp'd Late Flat Dutch (Sealed. Prize Medal Stock)	30	1 00	3 00
Thorburn's Late Flat Dutch (Market Gardn's Private St'k)	30	1 00	3 00
Buist's Florida Header (Sealed)	30	1 00	3 00
Buist's Short-Stem Brunswick Drumhead.....	30	1 00	3 00
Buist's Early Flat Dutch (Sealed, Prize Medal Stock)	30	1 00	3 00
Buist's Early Drumhead (Sealed, Prize Medal Stock)	30	1 00	3 00
Stein's Early Flat Dutch.....	30	1 00	3 00
Louisville Drumhead.....	20	50	1 75
Burpee's All Head Early.....	25	75	2 50
Large Surehead.....	25	75	2 50
New Orleans Flat Dutch.....	25	75	2 50
Improved Early Flat Dutch.....	20	70	2 00
Improved Early Drumhead.....	20	70	2 00

CABBAGE—Continued.

	Per Oz.	Per ¼ lb.	Per lb.
Fotler's Brunswick Drumhead	\$ 20	\$ 60	\$ 2 00
The Vandergaw.....	25	75	2 50
All Seasons.....	20	60	2 25
Marblehead Mammoth.....	20	60	2 00
Stone Mason Drumhead.....	20	60	2 00
Green Glazed.....	20	60	2 25
Blood Red Dutch (for pickling)	20	60	2 00
North Carolina Buncombe.....	15	50	1 50

CABBAGE, SAVOY.

Green Curled Savoy.....	20	60	1 75
American Curled Savoy.....	20	60	2 00
Green Globe Savoy.....	20	60	1 75
Large Drumhead Savoy.....	20	60	2 00
Perfection Drumhead Savoy.....	50	75	2 25

CARROT.

Early French Forcing.....	15	30	1 00
Early Scarlet Horn.....	15	25	90
Early Oxheart, or Guerande.....	15	25	90
Early Half Long Scarlet (point- ed root).....	15	25	90
Danver's Half-Long Scarlet.....	15	25	90
Buist's Imp'd Half-Long Scarlet	15	30	1 00
Early Half-Long Luc.....	10	25	90
Half-Long Scarlet Chantenay...	15	25	90
Half-Long Scarlet Carentan...	15	25	90
Half-Long Scarlet Nantes.....	15	25	90
Saint Vallery Intermediate.....	15	25	90
Long Orange.....	10	20	70
Buist's Improved Long Orange	10	25	80

CAULIFLOWER.

Early London.....	50	1 75	6 50
Extra Early Paris.....	60	2 00	7 00
Half Early Paris.....	60	2 00	7 00
Early Walcheren.....	50	1 50	6 00
Veitch's Autumn Giant.....	50	1 50	6 00
LeNormand Short Stem.....	60	2 00	6 50
Extra Early Dwarf Erfurt.....	2 50	8 00	28 00
Early Large Erfurt.....	1 50	5 00	18 00
Early Snowball.....	2 50	8 00	28 00
Mount Blanc.....	2 50	8 00	28 00

CELERY.

Large White Solid.....	20	50	1 75
Buist's Large White Solid.....	25	75	2 50
Golden Dwarf.....	20	60	2 00
Golden Self-Blanching.....	25	1 00	3 00
Giant Pascal.....	25	60	2 00
Half Dwarf.....	20	60	2 00
Sandringham Dwarf White.....	20	60	2 00
Incomparable Dwarf White.....	20	60	2 00
Boston Market.....	20	60	2 00
Perfection Heartwell.....	20	60	2 00
White Plume.....	25	75	2 50
Buist's Golden Market.....	50	1 50	4 00
Rose, or Pink.....	20	60	2 00
Celeriac, Turnip Rooted Celery	15	50	1 50

COLLARDS.

Common Southern.....	15	25	75
Georgia (selected).....	15	30	90
Southern Blue Stem.....	15	30	90
Southern Creole.....	15	30	90
Carolina.....	15	30	90

CORN SALAD.....

	10	20	60
--	----	----	----

CORN.

GARDEN VARIETIES.

	Per 4 Qts.	Per Peck.	Per Bush.
Extra Early Cory.....	60	1 00	3 00

CORN—Continued.

	Per 4 Qts.	Per Peck	Per Bush.
Crosby's Extra Early.....	\$ 60	\$1 00	\$3 00
Early Minnesota.....	60	1 00	3 00
New England Eight-row.....	60	1 00	3 00
Early Narragansett.....	60	1 00	3 00
Early Marblehead.....	60	1 00	3 00
Early Egyptian.....	60	1 00	3 00
Early Mammoth.....	60	1 00	3 00
Late Mammoth.....	60	1 00	3 00
Ne Plus Ultra (Shoe-Peg).....	60	1 00	3 00
Country Gentleman.....	60	1 00	3 00
Stabler's Extra Early.....	60	1 00	3 00
Stowell's Evergreen Sugar.....	60	1 00	3 00
Stabler's Pedigree.....	60	1 00	3 00
Perry's Hybrid.....	60	1 00	3 00
Improved Ruby.....	60	1 00	3 00
Potter's Excelsior, or Squantum	60	1 00	3 00
Hickok's Improved.....	60	1 00	3 00
Adam's Extra Early.....	50	1 00	3 00
Adam's Early.....	60	1 00	3 00

FIELD VARIETIES.

Buist's Im'd Early Golden Dent	40	60	1 75
Early Golden Dent.....	30	50	1 50
Buist's Prize Medal Southern			
Snow Flake.....	50	60	2 00
Buist's Large White Flint.....	35	50	1 75
Early Yellow Canada.....	40	50	1 75
Early Pennsylvania Eight-row.	40	50	1 75
Improved Early Leaming.....	40	50	1 75
Golden Beauty.....	40	50	1 75
White Hickory King.....	50	60	2 00
Improved Large Maryl'd White	40	50	1 75
Champion White Pearl.....	40	50	1 75
Blount's White Prolific.....	40	60	2 00
Mammoth Eared Gourd Seed...	40	50	1 75
Chester County Gourd Seed....	40	50	1 75
Cloud's Early Dent Gourd Seed	40	50	1 75

GRESS, Pepper Grass.

	Per Oz.	Per ¼ lb.	Per lb
Curled.....	10	20	50
Water.....	30	1 00	3 50

CUCUMBER.

We sell 10 lbs. of any one variety of Cucumber at 10 cts. per lb. less than quoted.

Improved Early White Spine...	10	20	60
Buist's Perfection Early White Spine (Sealed).....	15	30	1 00
Evergreen White Spine.....	10	20	60
Peerless White Spine.....	10	20	60
Hill's Forcing White Spine.....	10	20	60
Early Frame.....	10	20	60
Nichol's Medium Green.....	10	20	60
Early Cluster.....	10	20	60
Early Russian.....	10	20	60
Early Short Green.....	10	20	60
Long Green.....	10	20	70
London Long Green.....	10	25	80
Long Green Turkey.....	10	25	80
Buist's Long Green.....	15	40	1 00
Chicago Pickle.....	10	20	60
Boston Pickling.....	10	20	60
Giant Pera.....	15	20	60
Thorburn's Everbearing.....	15	20	60
Jersey Pickle.....	10	20	60
Long Pickly.....	10	20	60
Green Prolific Pickle.....	10	20	60
Gherkin, or Burr.....	15	30	1 00

EGG PLANT.

Large New York Purple.....	35	1 00	3 50
Buist's Improved Large Thornless Purple (largest and finest fruit, and best market variety)	50	1 25	4 50

ENDIVE.

	Per Oz.	Per ¼ lb.	Per lb.
Green Curled.....	\$ 15	\$ 35	\$1 25
White Curled.....	15	50	1 50
Broad-leaved.....	15	50	1 50

KALE.

Green Curled Scotch.....	10	25	75
Dwarf German Greens.....	10	25	75
Dwarf Curled Erfurt.....	15	30	1 00
Siberian Curled.....	10	20	50
Norfolk Curled.....	10	20	70
Curled Intermediate.....	15	25	80
Curled Mossbach.....	15	30	1 00
Dwarf Curled Berlin.....	15	40	1 25
Spring Kale, or Rape.....	06	15	40

KOHL RABI.

Long Green or White.....	15	50	1 75
Early Short le'd White Vienna	25	75	2 50
Early Purple Vienna.....	25	75	2 50
Early Erfurt (Short Leaved)....	25	75	2 75
New Queen.....	30	1 00	3 00

LEEK.

London Flag (American).....	15	30	1 00
Buist's Mammoth.....	20	60	2 00
Large Musselburgh.....	20	50	1 75
Large Carentan.....	20	50	1 75
Large Rouen.....	20	50	1 75

LETTUCE.

Buist's Perfect'n White Forcing	25	75	2 00
Early White Butter, or Cabbage	15	25	90
Early Prize head.....	15	25	90
Early Curled Silesia.....	15	25	90
Early Curled Simpson.....	15	25	90
Curled Simpson Black Seeded..	15	25	90
Philadelphia Market.....	20	40	1 50
Improved Early Hanson.....	15	30	1 00
Early Tennisball.....	15	30	1 00
Early Tennisball (Bl'k Seeded)	15	30	1 00
The Arlington Tennisball.....	20	75	2 00
Big Boston.....	20	35	1 25
Early Boston Market.....	15	30	1 00
Early Speckled Dutch Butter...	15	30	1 00
Large Passion Black Seeded....	15	30	1 00
Improved Royal Cabbage.....	15	30	1 00
White Royal Summer Cabbage	15	30	1 00
Henderson's New York Cabbage	20	40	1 25
Large Yellow Market.....	30	75	2 50
Drumhead Cabbage.....	15	25	90
Deacon.....	15	30	1 00
Oak-Leaved.....	15	30	1 00
Perpignan, or Early Summer...	15	30	1 00
India Curled.....	15	30	1 00
Trocadero.....	20	35	1 00
White Paris Cos.....	15	30	1 00
Salamander.....	15	30	1 00
Denver Market.....	20	35	1 00
Stubborn Head.....	20	50	1 50

MELON (Cantal'pe or Musk)

Extra Early Hackensack.....	10	20	60
Hackensack, or Turk's Cap.....	10	20	60
Netted Green Citron.....	10	20	60
Skillman's Netted Citron.....	10	20	60
Netted Nutmeg.....	10	20	60
Champion Market.....	10	20	60
Acme, or Baltimore.....	10	20	60
Pine Apple.....	10	20	60
Early Jenny Lind.....	10	20	60
Golden Jenny or Netted Gem..	10	20	60
Persian, or Casaba.....	10	20	60
Bay View.....	10	20	60

MARKET GARDENERS' WHOLESALE PRICE LIST.

MELON.—Continued.

	Per Oz.	Per ¼ lb.	Per lb.
Banquet	10	25	75
Delmonico	10	20	60
Chicago Market	10	20	60
Princess	10	25	75
Montreal Market	10	20	60
New Orleans Market, or Creole	15	40	1 25
Washington Market.....	15	40	1 25
Emerald Gem.....	10	20	60
Osage, or Miller's Cream.....	10	20	60

MELON (Water).

The Dixie.....	10	20	60
The Jones.....	10	25	75
Mountain Sweet.....	10	20	50
Kolb Gem.....	10	15	40
Kolb Gem (selected).....	10	20	50
Improved Gypsy.....	10	20	50
Gypsy (selected).....	10	25	75
Georgia Rattlesnake (selected).....	10	25	65
Jordan's Gray Monarch.....	10	25	75
Jackson.....	10	25	75
Florida Favorite.....	10	20	60
Mammoth Iron-Clad.....	10	25	60
Ice Cream (White Seeded).....	10	20	60
Ice Cream (Gray Seeded).....	10	20	60
Light Icing, or Ice Rind.....	10	20	60
Dark Icing.....	10	20	60
Cuban Queen.....	10	20	60
Peerless.....	10	20	60
Green and Gold.....	10	20	60
Phinney's Early.....	10	20	60
Orange Water.....	10	25	75
Pride of Georgia.....	10	20	60
Green Preserving Citron.....	10	20	60
Seminole.....	10	20	60

MUSTARD (for Growing).

Mammoth Southern Curled.....	10	25	80
Southern Creole.....	10	25	80
White London.....	5	10	25
Black or Brown.....	5	10	25

MUSHROOM SPAWN.

English, in double bricks, imported.
Price 15 cts. each; 10 lbs. \$1.00;
100 lbs., \$8 00.
French, in boxes, imported in 2 lb.
Boxes, 75 cts. each.

NASTURTIUM, or Indian Cress

Tall Yellow (for Pickling).....	15	25	80
Dwarf C. imson.....	15	25	80
Dwarf Tom Thumb (mixed).....	25	50	1 50

OKRA, or GOMBO.

Buist's Dwarf Prolific.....	10	20	60
Tall, or Long Green.....	10	20	50
Perkin's Mammoth Podded.....	10	25	75
White Velvet.....	10	25	75
Southern White.....	10	20	60

ONION.

For 5, 10 and 25 lb. lots, see page 11.

Buist's Yellow Globe Danvers.....	20	35	1 20
Yellow Flat Danvers.....	20	35	1 20
Yellow Strasburg.....	20	35	1 20
Large Red Wethersfield.....	20	40	1 30
Extra Early Red.....	20	40	1 30
White or Silver Skin.....	25	75	2 50
Southport Yellow Globe.....	20	50	1 50
Southport Red Globe.....	20	50	1 50
Southport White Globe.....	25	75	2 50

ONION SETS.—See page 11

ONION (Italian Varieties).

	Per Oz.	Per ¼ lb.	Per lb.
Giant Red Tripoli.....	20	40	1 50
Giant White Tripoli.....	20	40	1 50
Giant Red Bermuda.....	20	60	2 00
Giant White Bermuda.....	20	60	2 00
Improved Red Bermuda.....	20	60	2 00
Mammoth White King.....	20	60	2 00
Giant Yellow Rocca.....	20	50	1 75
White Queen.....	20	50	1 75
White Pearl.....	20	50	1 75
Silver White Etna.....	20	50	1 75
Early White Barletta.....	20	50	1 75
Mammoth Red Victoria.....	20	60	2 00
Mammoth White Victoria.....	20	60	2 00

PARSLEY.

Double Curled (dark green).....	10	25	75
Buist's Garnishing.....	15	30	1 00
Extra Dark Moss Curled.....	10	25	85
Emerald Green Curled.....	10	25	85
Champion Moss Curled.....	10	25	85
Myatt's Garnishing.....	10	25	75
Plain or Single.....	10	20	60

PARSNIP.

Sugar, or Hollow Crown.....	10	15	60
Student.....	10	15	60

PEPPER.

Bell, or Bull Nose.....	20	60	2 00
Large Sweet.....	20	60	2 00
Golden Dawn.....	20	60	2 00
Ruby King.....	20	60	2 00
Long Red Cayenne.....	25	60	2 00
Red Cherry.....	25	60	2 00
Celestial.....	25	60	2 00

PUMPKIN.

Casnow Crook neck.....	10	20	70
Large Cheese.....	10	20	50
Tennessee Sweet Potato.....	10	25	75
Jonathan.....	10	25	75
Dunkard.....	15	25	90
Quaker Pie.....	10	25	90
Nantucket.....	10	25	80
Mammoth King.....	20	50	1 50
Mammoth Etamps.....	20	40	1 25
Connecticut Field.....	5	15	30

RADISH.

We sell 10 lbs. and over of any one variety of Radish at 10 cts. per lb. less than quoted.

Buist's Sel'd Early Long Scarlet.....	15	30	1 00
Market Gardeners' Long Scarlet.....	15	30	1 00
Early Long Scarlet (Short-Top).....	10	20	50
Long Brightest Scarlet (W. T.).....	15	25	90
Early Scarlet Turnip.....	10	20	50
Buist's Earliest Scarlet Button.....	10	25	80
Prussian Early Scarlet Globe.....	15	25	90
Earliest Erfurt Scarlet Turnip.....	10	25	80
Early Scarlet Turnip (W. T.).....	10	20	65
Early Scarlet French Breakfast.....	10	20	65
Early Scarlet Olive-Shaped.....	10	20	65
French Half-Long Scarlet.....	10	20	65
Ne Plus Ultra Scarlet Turnip.....	10	25	80
Light's Sea let Fencing Turnip.....	10	30	1 00
Beckett's Chartier.....	10	20	75
Wood's Early Frame.....	10	20	50
Extra Early White Turnip.....	10	20	65
Early White Turnip.....	10	20	60
Early White Box.....	10	20	60
Yellow, or Gold'n Sum'r Turnip.....	10	20	70

RADISH—Continued.

	Per Oz.	Per ¼ lb.	Per lb.
White Summer Turnip.....	10	20	70
Buist's Golden Summer Turnip	10	20	70
Buist's White Summer Turnip	10	20	70
White Summer Strasburg.....	10	20	70
Black Spanish (Winter).....	10	20	60
Chinese Rose (Winter).....	10	25	75
Long White Vienna.....	15	25	90
Buist's New Long White.....	15	25	90

RHUBARB.

Victoria.....	20	40	1 50
Mammoth.....	20	40	1 50
Rhubarb Roots, per doz., \$1.00 ; per 100, \$7.00.			

SALSIFY, or Oyster Plant.

French Imported.....	10	25	80
American-Grown Seed.....	15	30	1 00
Mammoth White.....	15	40	1 40
Buist's Mammoth.....	20	60	1 75
Sandwich Island.....	15	40	1 40

SPINACH.

10 lbs at 25 cts. ; 25 lbs. at 20 cts ; 100 lbs. at 18 cts

Buist's Perfection Curled.....	8	12	50
American Curled Savoy.....	8	12	30
Bloomsdale Curled (selected)...	8	12	30
Round Savoy (Imported).....	8	12	30
Round Savoy (American).....	8	12	30
Broad-Leaved Flanders (Imp'd)	8	12	30
Broad-Leaved Flanders (Amer.)	8	12	30
Long Standing.....	8	12	30
Prickly Seeded.....	8	12	30

SQUASH.

Early White Bush, or Patty-Pan	10	20	50
Early Yellow Bush.....	10	20	50
Yellow Summer Crook-Neck.....	10	20	50
Mammoth White Bush.....	10	30	75
Giant Yellow Sum'r Cr'k-Neck	10	30	75
Boston Marrow.....	10	20	50
Buist's Improved Marrow.....	15	30	1 00
Hubbard.....	10	20	70
Marblehead.....	10	20	70
Perfect Gem.....	10	20	60
Golden Custard Bush.....	10	20	60
Fordhook.....	10	20	60
Pike's Peak.....	10	20	65
London Vegetable Marrow.....	15	40	1 00
Orange Marrow.....	10	25	75
Mammoth Chili.....	15	35	1 00

TOMATO.

We sell 10 lbs. of any one variety at 25 cts. per lb. less than quoted.

	Per Oz.	Per ¼ lb.	Per lb.
Buist's Beauty.....	25	80	2 75
Buist's Belle.....	40	1 00	3 50
Buist's Majestic (Pkt's 25 cts.)			
Livingston's Perfection.....	20	50	1 75
Livingston's Favorite.....	20	50	1 75
Livingston's Beauty.....	20	50	1 75
Livingston's Stone.....	20	60	2 00
Early Acme.....	20	50	1 75
Buist's Selected Early Acme..	25	75	2 25
Paragon.....	20	50	1 75
Buist's Selected Paragon.....	25	60	2 00
Trophy.....	20	50	1 75
Buist's Selected Trophy.....	25	75	2 25
Early Smooth Red.....	20	50	1 75
Turner's Hybrid, or Mikado..	20	60	2 00
Essex Hybrid.....	20	60	2 00
Dwarf Champion.....	20	65	2 25
Peach.....	25	65	2 25
Tree Tomato.....	35	80	2 75
Golden Trophy.....	20	75	2 25
Large Yellow.....	20	75	2 25
Red Pear-Shaped.....	20	75	2 25
Yellow Plum-Shaped.....	25	75	2 25

TURNIP (White Varieties).

	Per lb.	5 lb. lots Per lb.	10 lb. lots Per lb.
Red, or Purple Top (Strap-L.)	50	40	35
Early White Flat Dutch (Strap-Leaved).....	50	40	35
Early Red Top Globe.....	50	40	35
Buist's Mammoth Purple Top Globe.....	60	55	50
Large White Globe.....	50	40	35
Large White Norfolk.....	50	40	35
Pomeranian White Globe.....	50	40	35
Early White Egg.....	60	55	50
Large Cow Horn.....	60	55	50
Large White Hanover.....	60	55	50
Sweet German.....	60	55	50
Seven Top (for Turnip Greens)..	60	55	50

TURNIP (Yellow Varieties).

Purple Top Yellow Aberdeen...	50	45	40
Yellow Stone.....	50	45	40
Golden Ball.....	50	45	40
Amber Globe.....	50	45	40
Yellow Globe.....	50	45	40

RUTA BAGA or SWEDE.

Purple Top Yellow Ruta Baga..	50	40	35
Buist's Imp Yellow Rut. Baga	60	55	50
Sutton's Champion Swede.....	50	40	35
Skirving's Improved Swede.....	50	40	35
Carter's Elephant Swede.....	60	55	50

BUIST'S SELECTED SEED POTATOES.

PACKED IN LARGE ROUND-HOOP FLOUR BARRELS.

The Buist Brand of Seed Potatoes has an established reputation throughout the country for their Great Purity, Fine Quality and Productiveness.

They are grown in Vermont, Nova Scotia and Prince Edward's Island especially for seed, and are of an entirely different quality from the stocks generally sold, which are frequently mixed varieties of a very inferior grade, with the names branded on the barrels to suit the order. For a list of varieties see our Garden Guide.

PRICE : Per Barrel, \$3.00; 10 Barrels at \$2.90; 25 Barrels at \$2.80.

STORES:

922 and 924 Market St.

Next to Post Office.

Robert Buist Company,

SEED GROWERS,

Seed Farms:

Rosedale, Waterford and Morrisville.

PHILADELPHIA.